

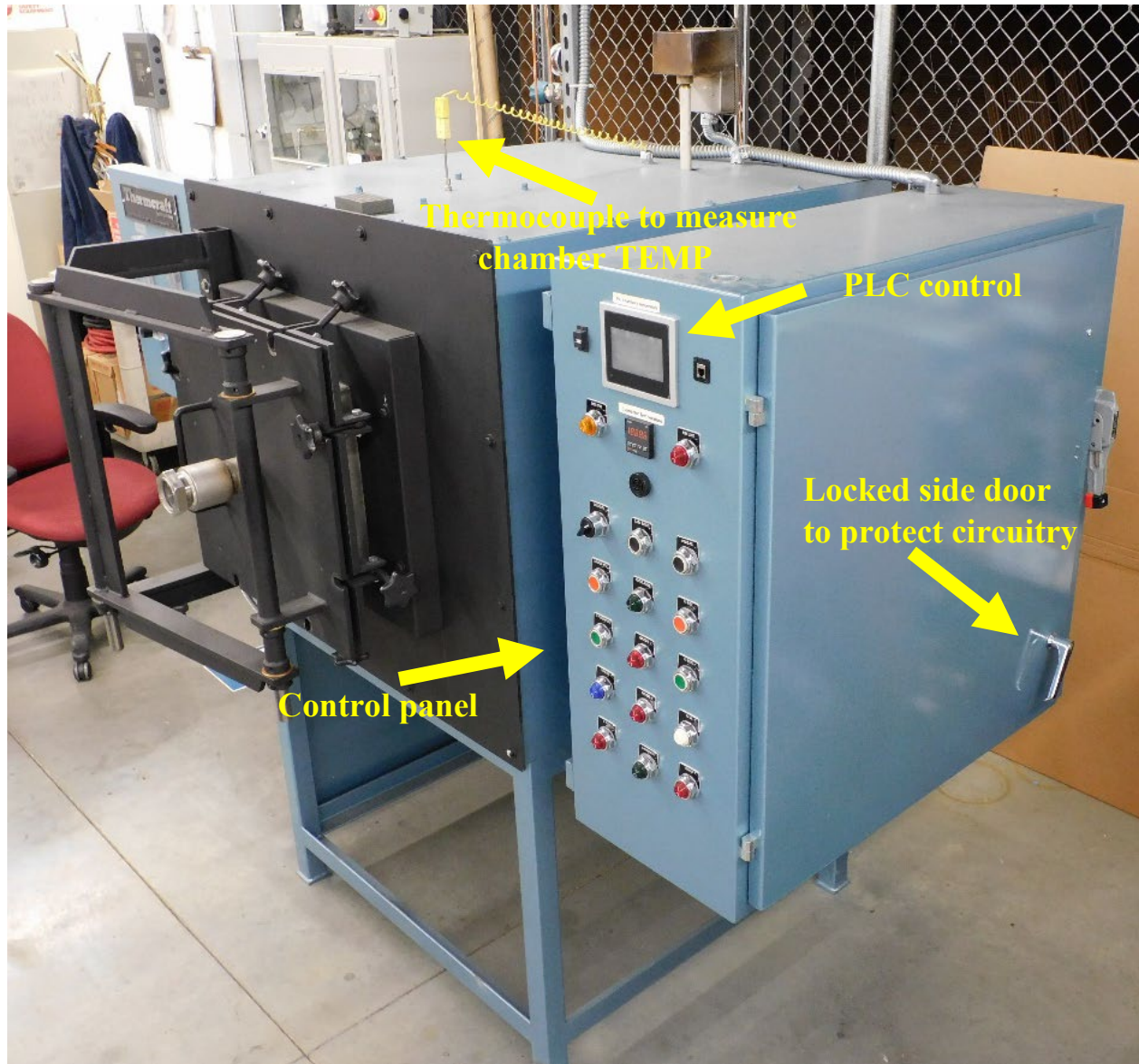
Thermcraft
Incorporated
www.thermcraftinc.com Winston-Salem, NC USA

Gas flow adjustments

3" viewing window

Door safety interlock

RETORT chamber door locked with 8 manual bolts



Thermocouple to measure chamber TEMP

PLC control

Locked side door to protect circuitry

Control panel

USB port to log data
of time and temp

Audible alarm for
gas or power loss

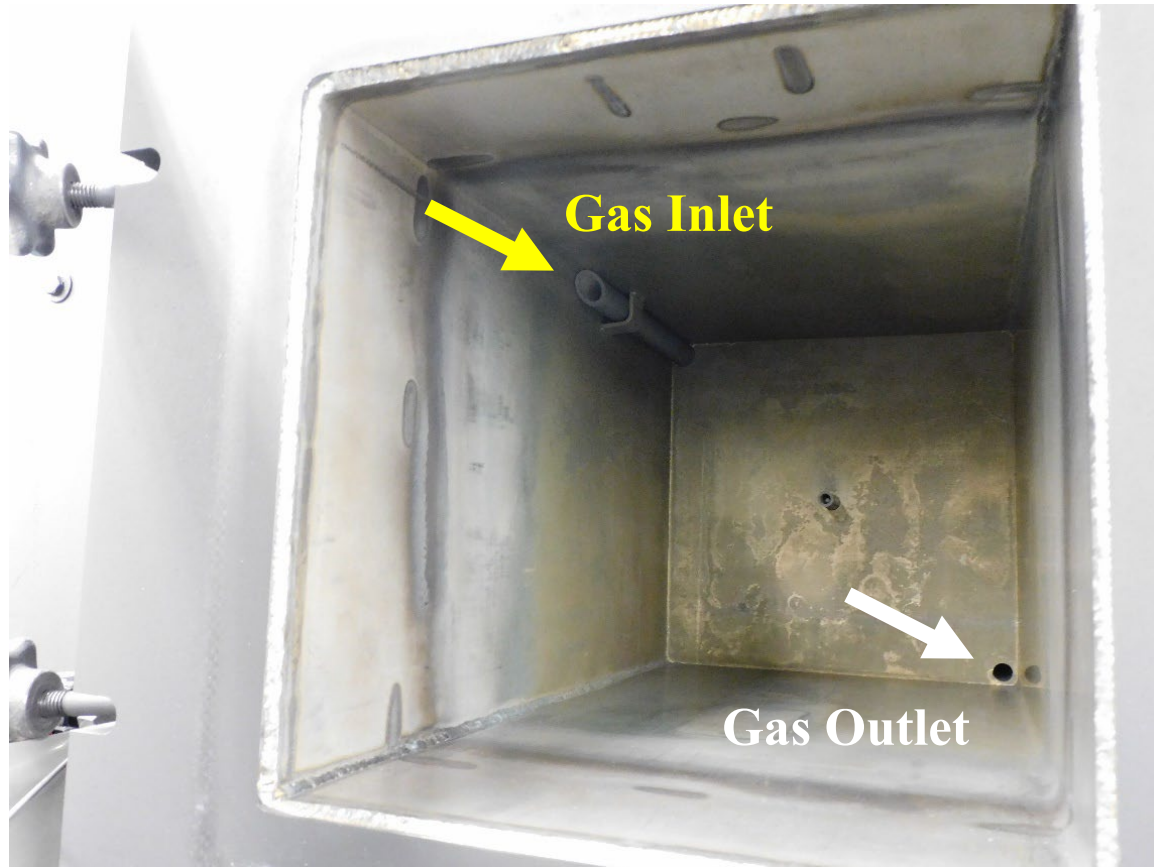
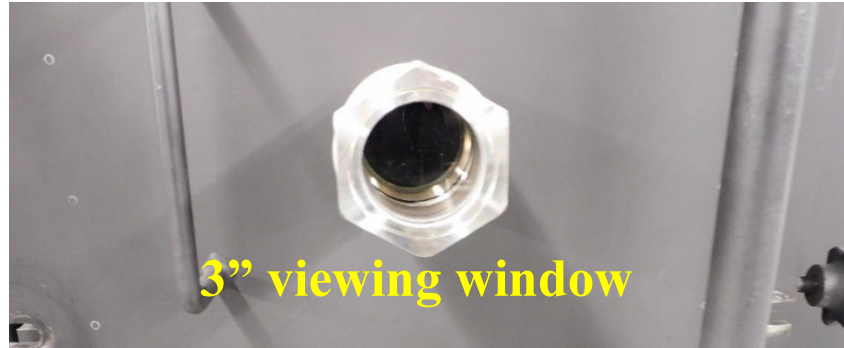
Start and stop buttons
and indicating lights to
identify gas type and
entry into the chamber





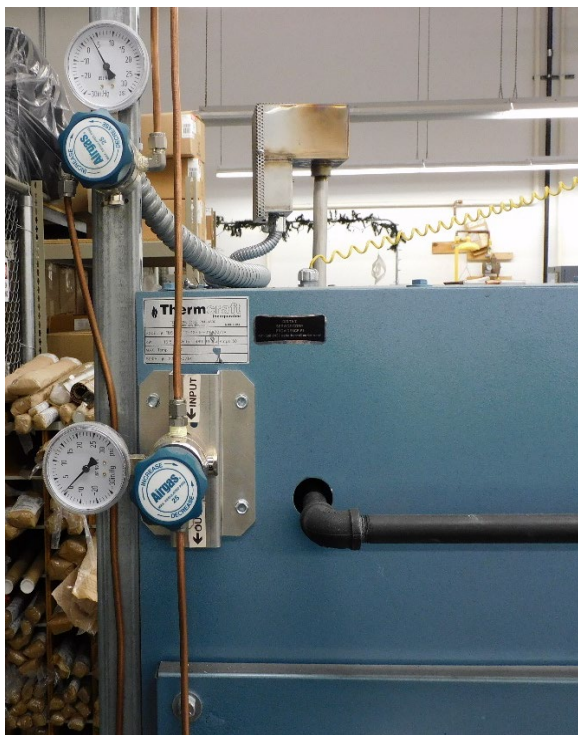
Locking bolts (8)

Chamber size
12" x 12" x 15" deep with door closed



Gas pressure flow
safety controls





Gas pressure regulators
to the furnace gas inlets

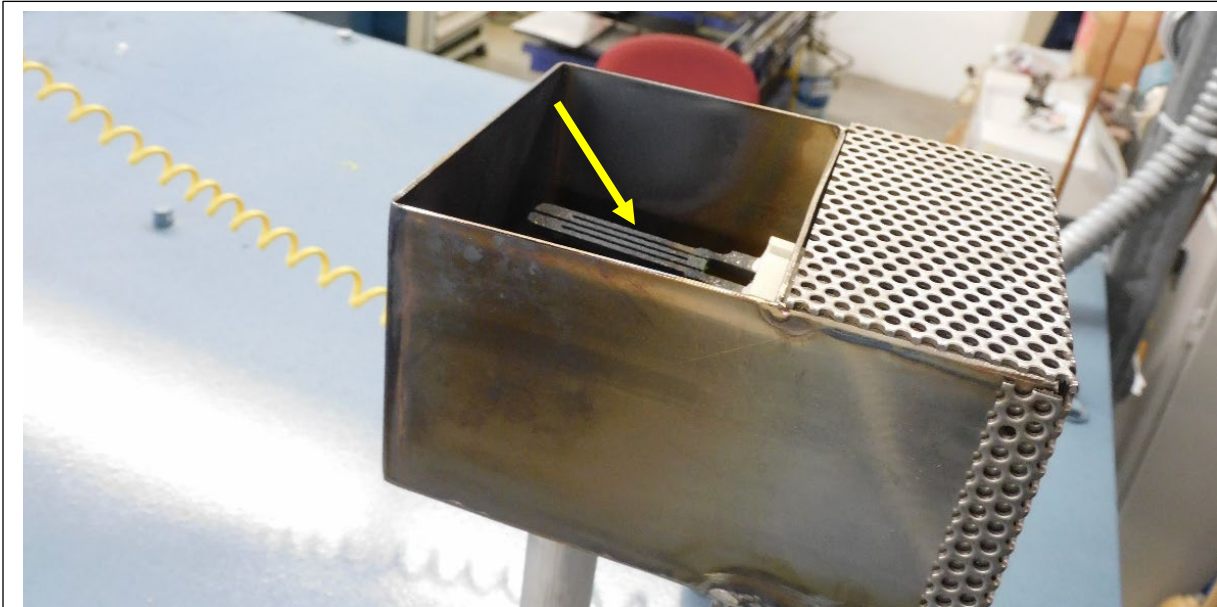


Gas pressure safety set points in gas inlets
for respective gas selected



Installed gas flow meters are for Hydrogen and Argon
Other gas flow meters can be substituted if desired

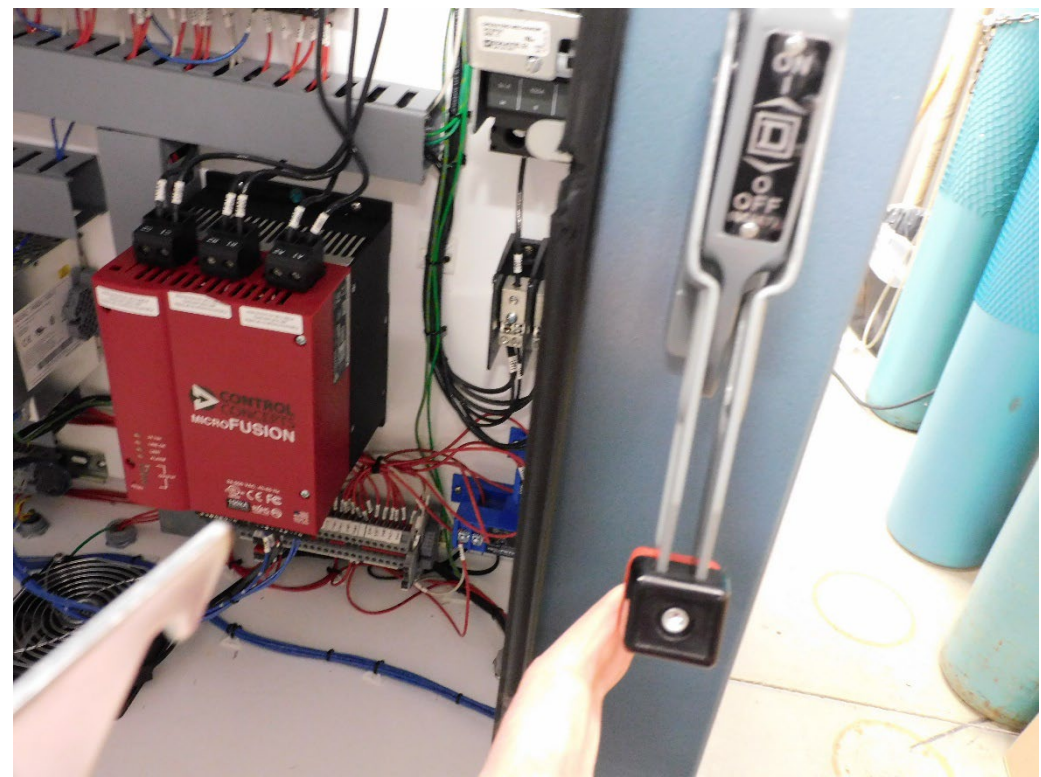
Safety devices



Dual igniters to burn off hydrogen [only far one visible]



Key locks circuitry door. Magnetic key holder



Mechanical safety interlock on the circuit compartment disconnects electric feed from the electrical compartment is the door opens

Electrical circuitry compartment

